

Industry we are serving



Rice Mill Plant & Machinery



Dal Mill Plant & Machinery

Awards & Accolade



Agromach Engineering Pvt. Ltd.

Jajru Road, Near Sector-59, Faridabad, Haryana - 121004

Mobile: +91-88008-99171, 88008-99183

E-mail: sales@agromachengineering.com,
marketing@agromachengineering.com

www.agromachengineering.com



Get your
BUSINESS 2X
with our Hi-Tech Machines
in 6 months

www.agromachengineering.com



About Us

Agromach Engineering Pvt. Ltd. was established in August 2007 and in year 2008 we started manufacturing food processing machines under the Brand name "**Agromach**". Our aim is to provide extraordinary solutions for all food / seed processing industries (Rice mill, Daal mill, Seed Processor Plant), offering a comprehensive range of innovative products, thereby providing complete customer satisfaction through quality. Our mission is to expand our presence in the entire world with our best quality products and customer satisfaction.

We maintain the
Quality Management System
as per International
Standard ISO 9001:2015
and
ISO 14001:2015



1

On Time
Delivery

2

Reduction in
Rejection

3

To Improve The
Business

4

Reduction in
Customer Complaint

Plant & Machineries

- CNC Turret Punch Press (EM 2510 N-44 Station), Japan
- CNC Bending Machine (RG-80-2.5M Bed Size), Japan
- Laser Machine
- Lathe CNC Machine (Make Power)
- MNTR Machine
- Utilities Compressor - U.P.S., Generator (125KV)
- Fabrication Machineries
- Mig Welding Machines
- Spot Welding Machines
- Profile Cutting Machines
- Drill Machines
- Powder Coating Plant with Shot Blasting
- Complete In House Processing
- Testing and control activities at every stage of production
- In House Store of Buffer Stock for Raw Material & Finished Goods.



PROMPT
CUSTOMER
SERVICE &
CUSTOMER
SATISFACTION

Paddy Cleaner

Application

Highly Efficient
AGROMACH
Cleaning Machine
for Paddy



Salient Features

- The machine is fitted with inlet feed rolls.
- The aspiration chamber is fitted with one waste augur.
- The screen system consist of one sieve boat with 1 short scalping screen layer and 2 long grading/sand screen layers.
- The machine has an integral fan, fixed speed drive and motor.
- The machine of steel construction with sieve boat also in steel construction.
- Eccentric shaft mechanism reduced breakdown.
- Top 2 sieves punched from CNC Machine zigzag holes high perforation area.

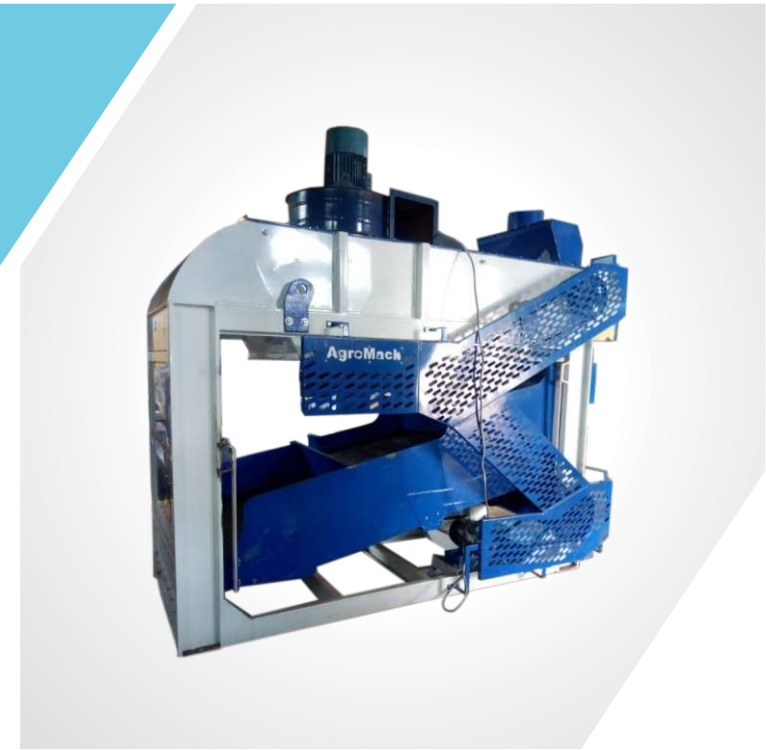
Specifications

Model No.	Capacity on Paddy	Fan Motor	Sieve Boat Motor	No. of Sieve Boat	Dimension (L x W x H)
PEPL-600	1-2 TPH	3 HP	1 HP	1	3000mmx1150mmx2210mm
PEPC-900	3-4 TPH	5 HP	2 HP	1	3000mmx1450mmx2210mm
PEPC-1050	4-5 TPH	7.5HP	2 HP	1	3000mmx1600mmx2210mm
PEPC-1200	5-7 TPH	7.5 HP	2 HP	1	3000mmx1750mmx2210mm
PEPC-1500	10-12 TPH	10 HP	3 HP	1	3000mmx2050mmx2210mm
PEPC-1500X2	16-20 TPH	10 HP	3 HP	2	3285mmx2135mmx3000mm

Fine Cleaner

Application

Highly Efficient
AGROMACH
Fine Cleaner for
cleaning & grading
of Rice.



Salient Features

- The machine is fitted with inlet feed rolls
- The aspiration chamber is fitted with one waste augur.
- The screen system consists of 1 sieve boat with 1 short scalping screen layer and 3 long grading /sand screen layers.
- The machine has an integral fan, fixed speed drive, and motor.
- The machine is of steel construction with sieve boat also in steel construction
- Eccentric shaft mechanism reduced breakdown.
- Top 2 sieves punched from CNC Machine zigzag holes high perforation area, better cleaning.

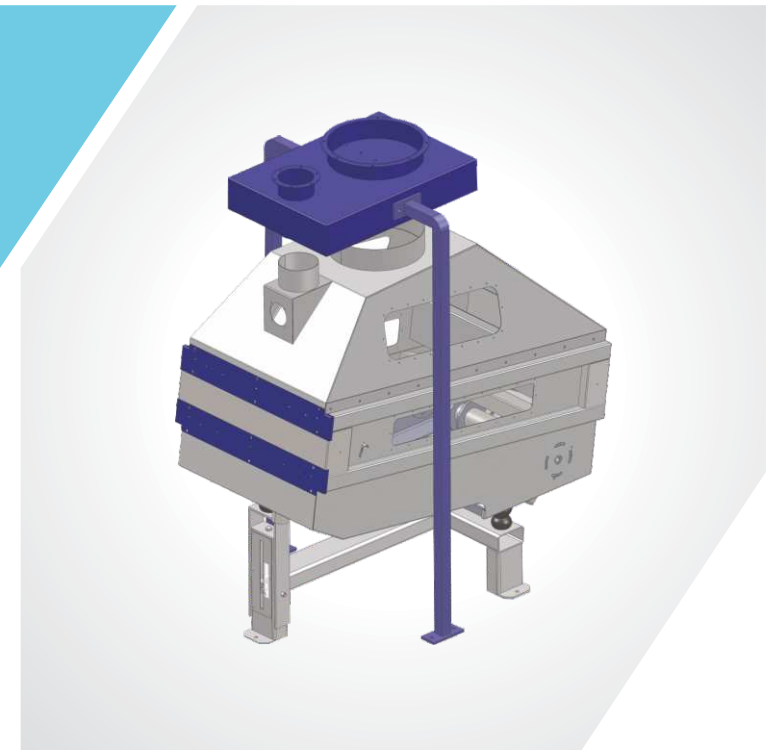
Specifications

Model No.	Capacity on Paddy	Fan Motor	Sieve Boat Motor	No. of Sieve Boat	Dimension (L x W x H)
PEFC-600	1-2 TPH	5 HP	1 HP	1	3000mm x 1150mm x 2210mm
PEFC-900	3-4 TPH	7.5 HP	2 HP	1	3000mm x 1450mm x 2210mm
PEFC-1050	5 TPH	7.5 HP	2 HP	1	300mmx1600mmx2210mm
PEFC-1200	5-7 TPH	10 HP	2 HP	1	3000mm x 1750mm x 2210mm
PEFC-1500	10-12 TPH	12.5 HP	3 HP	1	3000mm x 2050mm x 2210mm

Paddy **De-Stoner**

Application

Highly Efficient
AGROMACH
D-Stoner for
separating the stone
in Paddy & Rice



Salient Features

- Efficient and precise separation of stone and heavy material by density difference.
- Fitted with two vibro motor for trouble free & long life with low noise operation.
- Provided with closed circuit dust/fines aspirator system.
- Separate collections of stone and dust particles from the aspirator.
- Sturdy rigid and heavy duty construction. Precise construction assures stone free paddies.
- Vibro motor assure noiseless , trouble free operations.
- Negligible loss of paddy.
- Self cleaning system for maximum operating efficiency.
- Remove immature grain along with other impurities.
- Powder Coated.
- High Tensile Hardware used for assembly.

Specifications

Model No.	Capacity on Paddy	Power Required	Voltage	Dimension (L x W x H)
PEDS-900	3-4 TPH	0.5 HP x 02 Nos	415/50Hz	1645mm X 1105mm X 1950mm
PEDS-1050	5 TPH	0.5 HP x 02 Nox	415/50Hz	1645mmx1255mmx1950mm
PEDS-1200	6-7 TPH	0.5 HP x 02 Nos	415/50Hz	1645mm X 1405mm X 1950mm
PEDS-1500	8-10 TPH	1 HPx 02 Nos	415/50Hz	1645mm X 1705mm X 1950mm

Vibro **Pneumatic Sheller**

Application

Highly Efficient
AGROMACH
PNEUMATIC RUBBER
SHELLER for De-Husking
is good to work on raw,
steamed, parboiled,
boiled and basmati rice



Salient Features

- Special vibro feeder arrangement to feed the paddy grain vertically between the two rubber rolls, Enhancement of rubber rolls life
- Infinite adjustment of degree of Hulling
- Roll movement both in Automatic and Manual mode
- Special cooling arrangement for rubber roll. Ease of maintenance.
- Heavy body, Ensures hers vibration and reduces chances of paddy breaking.

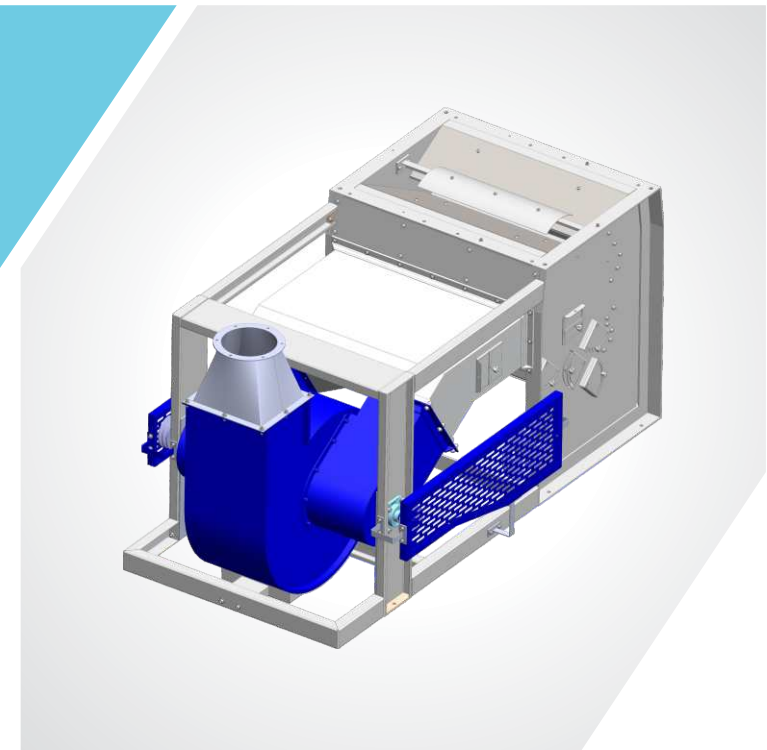
Specifications

Model No.	Capacity on Polly	Motor	Voltage	Dimension (L x W x H)	Approx Weight (Kg)
PEVPS_3TPH	3.4 MT P/H	10 HP	415 v/50 v/50 Hz	1470mm X 980mm X 1325mm	750 KG
PEVP_4TPH	4.0 MT P/H	12.5 HP	415 v/50 v/50 Hz	1470mm X 980mm X 1325mm	800 KG
PEVPS_5TPH	5 MTP/H	15 HP	415 v/50 v/50 Hz	1500mm X 985mm X 1385mm	800 KG

Husk Aspirator

Application

Highly Efficient
AGROMACH
Husk Aspirator for
separating husk
and brown rice.



Salient Features

- Compact size, requires small installation area.
- Sturdy rigid and heavy duty construction.
- Efficiently separation of husk and brown rice by density difference.
- Fan designed in stainless steel for a better life.

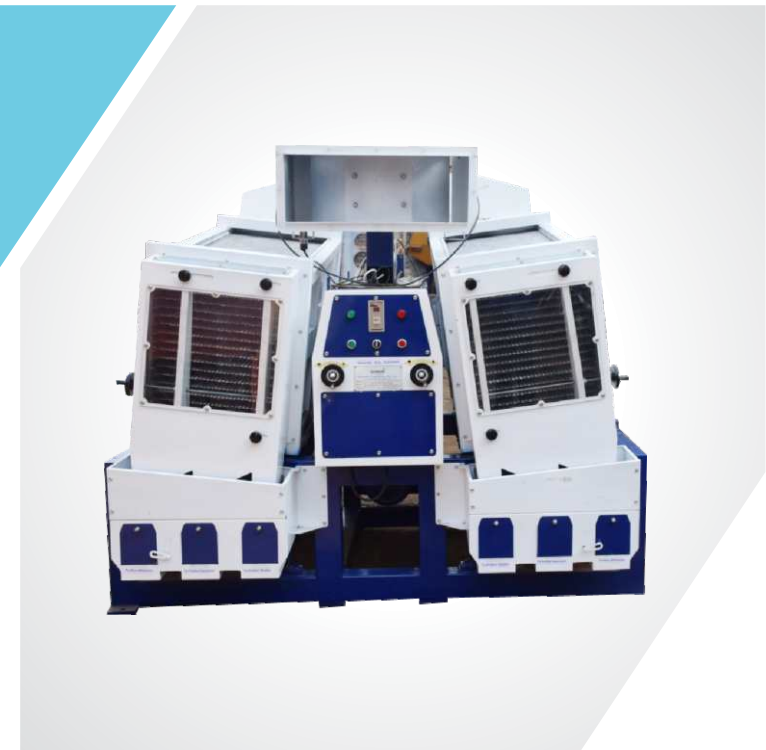
Specifications

Model No.	Capacity on Polly	Motor	Voltage	Dimension (L x W x H) (in mm)	Approx Weight (Kg)
PEHA-4TPH	4 MT P/H	7.5 HP	415 v/50 Hz	2130X 1000 X 1110	550 KG

Paddy Separator

Application

Highly Efficient
AGROMACH
separator for high
capacity and efficient
separation of paddy
& brown rice.



Salient Features

- Oscillating tray type
- High output with adjustable stroke and inclination of tray
- Separation of three distinct classification. Paddy, mixed, Brown rice.
- Stainless steel tray for to avoid wear & tear. Sensor for flow indication.

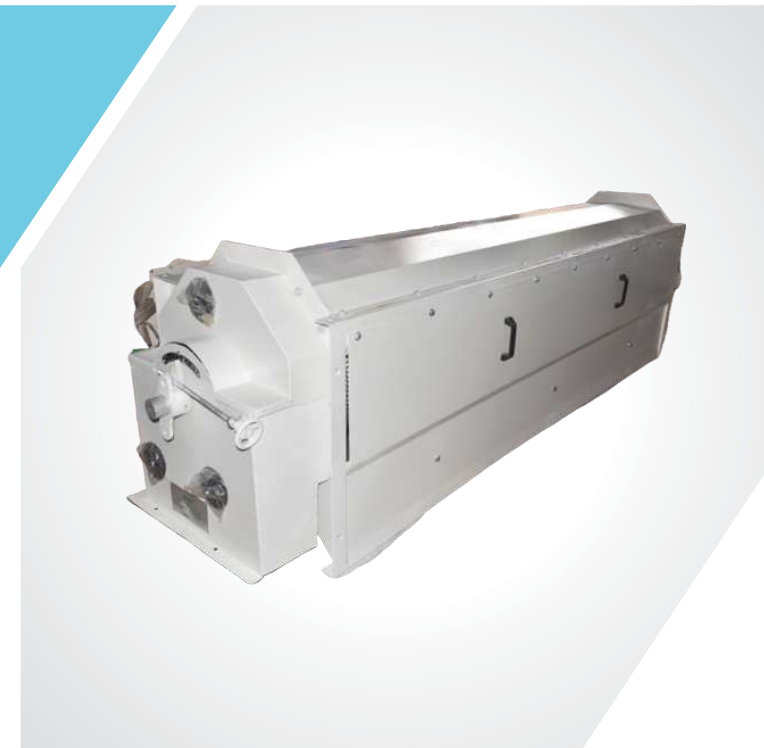
Specifications

Model No.	Power	Voltage	No. of SS Tray	Dimension (L x W x H)	Approx Weight (Kg)
PEPS-3TPH	3 HP	415 v /50 Hz	20	1750mm x 1400mm x 1500 mm	950 kg
PEPS-8TPH	5 HP	415 v /50 Hz	40	1750mm x 2250mm x 1800 mm	1350 kg

Length Grader

Application

Highly Efficient **AGROMACH** Length Grader for broken rice separation & rice tips separation.



Salient Features

- High accuracy separation of head rice from the mixed
- This machine can be used in broken rice separation of different length of Basmati rice.
- Easy maintenance and minimum operation cost
- Special Hard chrome plated cylinder also available.

Specifications

Model No.	Power	Voltage	Screen Length	Screen Diameter	Dimension (L x W x H)	Approx Weight (Kg)
PELG_1TPH	1 HP	415 v /50 Hz	2285 MM	430 MM	3180mm x 710 mm x 795mm	400 kg
PELG_2TPH	2 HP	415 v /50 Hz	2920 MM	600 MM	4050mm x 1100 mm x 1250mm	850 kg

Rice Whitener

Application

Highly Efficient **AGROMACH** whitener is good to work on Raw, Steamed, Parboiled, Boiled and Basmati Rice.



Salient Feature

- Ensures uniform and very high degree of Whiteness on all grains.
- This machine provided option of various adjustment like the flow and gap between screens & stones enables to uniform polish with less broken
- Vertically mounted silicon carbide grinding wheel assures higher Rice Yield and broken Reduction
- Imported Differential manometer for precise control of chamber Air pressure
- Sturdy, rigid and heavy duty construction. The quickly exchangeable screen frames with screen, grinding wheel
- Very high degree to whiteness higher rice yield
- Easy replacement of grinding wheel
- Indication of load on motor, easy to maintain, Does not require special foundation
- Double Aspiration System to ensure uniform removal of Bran.

Specifications

Model No.	Capacity On Paddy	Power Required	Voltage	No. of Grinding	Standard Grit Size	Dimension (L x W x H)	Approx. Weight
PEWT-4TPH	4 TPH	30 HP	415 v /50 Hz	6	18, 24, 30	1450mm x 980mm x 1495mm	700 kg
PEWT-6TPH	6 TPH	40 HP	415 v /50 Hz	6	18, 24, 30	1600mm x 1115mm x 1720mm	1030 kg
PEWT-8TPH	8 TPH	60 HP	415 v /50 Hz	7	18, 24, 30	1670mm x 1180 mm x 1830mm	1200 kg

Silky **Polisher**

Application

Highly Efficient **AGROMACH**

Silky Polisher is used for silky shining on rice surface. It's good to work on Raw, Steamed, Parboiled, Boiled and Basmati rice.



Salient Feature

- Specially designed beaters for high degree of glazing
- The rice is polish by friction among their grain & removing the bran and dust particles and giving the rice luster finish
- Alloy steel feeding roll, cam rollers, and screen components are Surface hardened for durability and hygiene
- An automatic controlled moisture injection systems
- Most air & water is injected into the polishing chamber for uniform polishing of rice.
- Most air & water is injected for uniform polishing of rice.
- Two Chamber, 1st is mixing chamber & 2nd is polishing chamber

Specifications

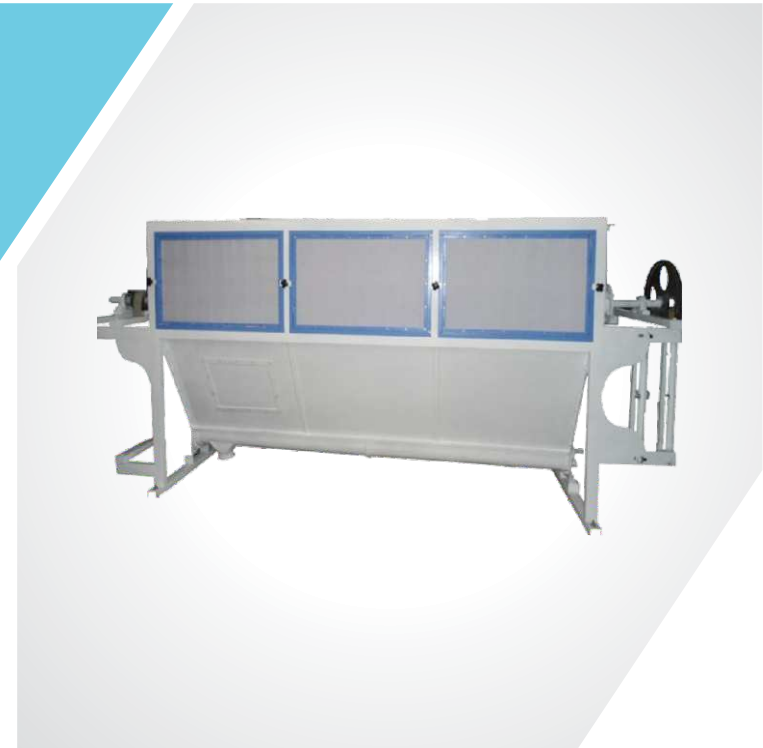
Model No.	Input Capacity (Paddy)	Power Required	Voltage	Overall Dimension (LxBxH)	Approx Weight (Kg)
PESP 4T	4 Ton	50 HP, 60 HP	415 V / 50Hz	2100 X 595 X 2430	910 kg
PESP 8T	8 Ton	75 HP	415 V / 50Hz	2250 x 700 x 2430	1100 kg

Centrifugal **Dressing Machine**

Application

AGROMACH

Centrifugal has a very wider application. It is used for separation of left out rice tips from brawn, in rice mills.



Salient Features

- Nylon net in machine helps high quality powder get filtered and collected in a bag.
- There is a nylon brush to clean filter nylon net.
- This machine is made of heavy M.S. angle ,CRC sheet and EN8 shaft.
- The machine has high quality dust proof ball bearing and bearing housing.
- Our machine does not vibrate and so generates very little sound.
- The capacity of this machine depends on nylon net mesh and type of material.
- Low energy consumption

Specifications

Model No.	Capacity On Bran	Power Required	Voltage	No. of Seats	Dimension (L x W x H) in mm	Approx. Weight (Kg)
PECF 4T	0.7 MT P/h	3 HP	415 v /50 Hz	2	3000 X 1000 X 1525	600 kg
PECF 8T	1.2 MT P/h	5 HP	415 v /50 Hz	3	4000 X 1000 X 1525	850 kg

Cylindrical **Sizer**

Application

An extremely efficient system for separation of over sized and under sized grains.
The machine is equally effective for grading of paddy as well as rice.



Salient Feature

- Easy to install ,operate and maintain .
- Easy to change the cylindrical screen from front.
- Low power consumption.
- Precise separation of rejection size.
- Machine is duly Powder coated and hence resistant to rust and corrosion.

Specifications

Model No.	Capacity (Ton/Hr) Rice	Power Required	Voltage	No. of Cylinder	Dimension (L x W x H) in mm	Approx. Weight (Kg)
PECS 20	2	1 HP	415 v /50 Hz	2	850 x 2125 x 1250	400 kg
PECS 40	4	1.5 HP	415 v /50 Hz	4	850 X 2125 X 1850	650 kg
PECS -60	6	2 HP	415 v /50 Hz	6	850 X 2125 X 2465	900 kg

Rotary **Separator**

Application

This machine is designed for separation of broken rice as its diameter wise with rotary motion. This machine is equipped with 5 trays and 5 outputs for differential diameters of rice like small broken, medium broken, big broken and head rice



Salient Features

- Self cleaning mechanism provided to avoid clogging of screens.
- Extra sieves are provided for processing of all types of rice.
- Heavy rigid structure for noiseless and trouble free operations.

Suitable for

Raw Rice, Steamed Rice, Parboiled Rice, Basmati Rice

Specifications

Model No.	Capacity	Power Required	Voltage	No. of Seives	Dimension (L x W x H) in mm	Approx. Weight (Kg)
PERT-3T	2 - 3 TPH	Motor-2hp/1.5kw-960RPM	415V / 50 HZ	5	1250x1450x1500	700 kg
PERT-6T	4 - 6 TPH	Motor-2hp/1.5kw-960RPM	415V / 50 HZ	5	1250x1450x1700	760 kg

Bucket Elevator

Application

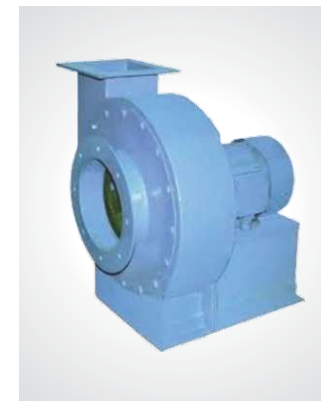
Highly Efficient
AGROMACH
Elevators are used
for conveying the
material vertically to
next machine.

Salient Feature

- Both side powder coated with salt spray test sustenance for more than 500 hours.
- Folded design and high tensile hardware used for assembly.
- Motor used ABB or Equivalent . Gearbox – Bonfiglioli / PBL / Premium.
- Heavy duty casting pulley at Top and specially designed fabricated pulley used at bottom to avoid broken generation.
- Sturdy rigid and heavy duty construction. Perfect alignment ensures zero wear and tear and more life.
- Option for air aspiration in the head of the elevator.
- Availabe in 2 models - Silver & Platinum



Other Accessories



Blower

Cyclone



Magnet

Airlock



Some of our Installed Projects



Our Esteemed **Clientele**

Sr. No.	Client Name	Address	Year
1	Bala Sundri Rice Mill	Kutal, Karnal	2015-2016
2	Yadav Solvex	Jalalabad Road, Muktsar, Punjab	2015-2016
3	Manjusa Mini Rice Mill	Sakri, Kudra, Kaimpur, Bihar	2015-2016
4	Uday Rice Mill	Ganjam, Berhampur, Orissa	2015-2016
5	Khusi Dal Mill	Near Mandhan Dharamkanta, Khokhli Road, Bhatapara	2015-2016
6	Vaishnavi Multigrains Pvt. Ltd.	Bandha Deoghar, Jharkhand	2015-2016
7	Om Trading Company	Kheri, Allahbad, U.P.	2015-2016
8	Subhangi Agritech Pvt. Ltd.	Village P.O. Bairka, P.S. Arti, Distt. Gaya, Bihar	2015-2016
9	Gagan Agro & Rice Exporters	Ubhewai Road, Badrukhan, Sangrur, Punjab	2015-2016
10	Vinay Food Processing	Surajpur Road, Near Aman Dal Mill, Bhatapara, Chattisgarh	2015-2016
11	Salasar Foods	Baraipali, Sambhalpur, Orissa	2015-2016
12	Sita Ram Vijender Kumar	Niyadar Ganj, Dadri (G.B Nagar)	2015-2016
13	Sigma Spice Industries Pvt Ltd	Malpani Complex Kenduguri, Jorhat Assam	2016-2017
14	Jai Mahaveer Traders	Narkatiyaganj, Bihar	2016-2017
15	Kanwar Ganga Pulses	Grasim Road Khokhli, Bhatapara Cch	2016-2017
16	Sree HD Overseas	Kaithal Road Karnal Nissing	2016-2017
17	Shakambari Rice Mill Pvt Ltd	Tupudana Industrial Area PO Hatia,	2016-2017
18	Maa Sharde Bhandar	Gaushala Road, Chanpatya, West Champaran Bihar	2016-2017
19	Purvanchal Rice Mill	Meergaunj Khalilabad	2017-2018
20	K.G. Udyog	Khokali Road Bhatapara	2017-2018
21	Mangat Ram Rice Mill	Dhatir Road Prithla Palwal	2017-2018
22	Shiv Shakti Rice Mill (Nepal)	Kalaiya Bara Nepal	2017-2018
23	Jhm Rice Mills Pvt Ltd	Dakshingram , Palsanda Nabagram, Murshidabad	2017-2018
24	Kamtanath Food Product Pvt. Ltd.	Dabra Distt. Gwalior Mp	2017-2018
25	Shri Ji Agro Product	Delhi Bye Pass Road, Mathura U.P.	2017-2018

Our Esteemed **Clientele**

Sr. No.	Client Name	Address	Year
26	Jay Shiv Shakti Enterprises	Narkatiya Ganj Road, Kumarbagh Industrial Area	2017-2018
27	Sagar Rice Mill Pvt. Ltd.	Plot No- 50-51, Sec-C, Industrial Area, Sirgitti, Bilaspur	2017-2018
28	Shyamatarata Rice Mills Pvt. Ltd.	G.T Road, Pandua, Hooghly, West Bengal	2017-2018
29	Yash Dall Mill	Near Shivani Dharma Kata Mudipar Road, Bhatapara	2017-2018
30	Athoru Flour Mill Pvt. Ltd.	Po Jiwadhara Ps Pipara Kothi, Distt East Champaran, Bihar	2017-2018
31	Navdanya Enterprises	N.H.-6, Near BPCL Coco Petrol Pump, At. Govindpur, Dt. Bargarh, Odisha.	2018-2019
32	Hinduja Dall Mill	Surajpura Road, Bhatapara, Chhattishgarh	2018-2019
33	Choudhury Dall Mill Pvt. Ltd.	Industrial Estata, Jagatpur	2018-2019
34	Jay Durga Ma Rice Mill P. Ltd.	Bhairahawa, Rupandehi, Basantpur, Ward No 09, Nepal	2018-2019
35	Hoque Mercantile Pvt. Ltd.	27, Bentinck Street, M.K. Point, 6th Floor, Kolkata	2018-2019
36	Karia Sati Agro Industries Pvt. Ltd.	"P.O Madhupur Deoghar, Jharkhand"	2018-2019
37	P S Agro Industries	Village Mangurdih Jama Dumka	2018-2019
38	M.B Agro Mills	Malpuri Sitarganj U.S Nagar	2019-2020
39	Maa Ambey Chura Mill	Damka, Gulabbagh-854326, Purnia, Bihar	2019-2020
40	Shiv Industries	Industrial Area Kumar Bagh West Champaran	2019-2020
41	Shankar Rice Mill	Village Jangipur Mohini Asthawan Nalanda	2019-2020
42	Shri Chinmay Sagar Rice Industries	Village Sahajpur, Distt. Jabalpur Beside Abhishek, Dharma Kata	2019-2020
43	Suman Satyanarayan Const. and Food Industries	Plot No 42 At Industrial Area Lamtara Phase-1 Lamta, Katni	2019-2020
44	Dry Land Farmers Producer Company Ltd.	Survey 81/6 & 81/9 Chitrampatti Village, Kuruvikulam Union Kovilpatti	2020-2021
45	Tirupati Pulses	Chikhali Opp. Jay Shree Paddy Dhamdha Road Durg	2020-2021
46	Shri Khatu Naresh Flour Mill Unit II	Near Railway Crossing Sitargang Road, Pullbhatta Kichha Udham Singh Nagar	2020-2021
47	New Baidehi Khadya Udhayog	Bayalbas, Nepal	2020-2021
48	Prem Sudha Agro	Parsoda Road Near Village Charota PO Belmond, Balod Distt Balod	2020-2021
49	Neptune Foods and Helthcare India	F 704, Royal Floor Plot No. 1 Ashok Vihar Alwar	2020-2021